

Ruthin Awelon Extra Care Proposal

Wellbeing Impact Assessment Report

This report summarises the likely impact of a proposal on the social, economic, environmental and cultural well-being of Denbighshire, Wales and the world.

Assessment Number:	108
Brief description:	The proposal is to reconfigure Awelon Care Centre as Extra Care Accommodation
Date Completed:	Version: 0
Completed By:	
Responsible Service:	Community Support Services
Localities affected by the proposal:	Ruthin,

IMPACT ASSESSMENT SUMMARY AND CONCLUSION

Before we look in detail at the contribution and impact of the proposal, it is important to consider how the proposal is applying the sustainable development principle. This means that we must act "in a manner which seeks to ensure that the needs of the present are met without compromising the ability of future generations to meet their own needs."

Score for the sustainability of the approach

Could some small changes in your thinking produce a better result?

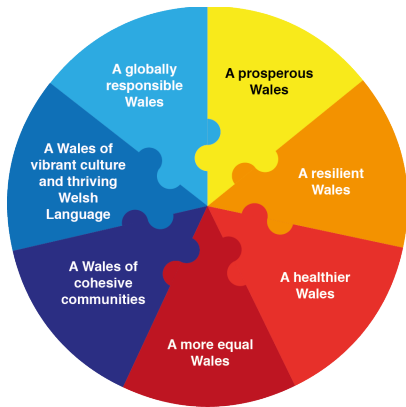
(3 out of 4 stars)



Actual score: 23/ 24.

Summary of impact

Wellbeing Goals



- A prosperous Denbighshire Positive
- A resilient Denbighshire Positive
- A healthier Denbighshire Positive
- A more equal Denbighshire Positive
- A Denbighshire of cohesive communities Positive
- A Denbighshire of vibrant culture and thriving Welsh language Positive
- A globally responsible Denbighshire

Main conclusions

THE LIKELY IMPACT ON DENBIGHSHIRE, WALES AND THE WORLD

A prosperous Denbighshire

Overall Impact:	Positive
Justification for Impact:	The development will have a very positive effect on the well-being of older people in Denbighshire and will enable them to continue to participate in their local communities. Working in the development will enhance the skills of the workforce and the scheme will provide an attractive and sustainable workplace. The completed scheme will provide a vibrant communal centre which will be open to all the community to encourage well-being. The replacement centre will be energy efficient and will reduce carbon emissions significantly compared to the existing building. The Building will

Positive consequences identified:

The current old and energy inefficient Awelon Building will be replaced with a modern sustainable building reducing the carbon footprint of the centre. The building will be highly insulated and draught proofed with triple glazing throughout and will be looking to achieve BREEAM "Excellent " standard.

The development will employ local contractors and tradespersons which will add to the local economic development

The completed development will be staffed by carers who are trained to encourage and promote independence
The carers and support workers who work at the scheme will hone their skills in reablement

Unintended negative consequences identified:

The scheme is likely to need less staff than are currently employed as the principle of Extra Care enables and encourages older people to stay independent for longer and thereby be less reliant on paid carers

During the build phase the development is likely to have a negative impact on transport in Ruthin centre but this disruption will be kept to a minimum

Mitigating actions:

With Partner promote the awareness of the new development in the local community.

Work with HR to ensure that all existing staff are aware of redeployment opportunities.

Have a robust access and transport strategy.

A resilient Denbighshire

Overall Impact:	Positive
Justification for Impact:	This proposal will have a positive impact because the primary objective is to replace an old and energy inefficient building with a modern building which will meet exacting environmental and sustainability standards.

Positive consequences identified:

This proposal involves replacing an existing building with a new building which will conform to the highest BREEAM standards and will therefore have a neutral impact on biodiversity and the natural environment

This proposal involves replacing an existing building with a new building which will conform to the highest BREEAM standards and will therefore have a neutral impact on biodiversity and the built environment

Tenants will be supported and encouraged to reduce and recycle waste.

This proposal involves replacing an existing building with a new building which will conform to the highest BREEAM standards and will therefore have a positive impact in reducing energy. The principle of extra care is that older people are encouraged to remain independent but if they do require care the carers are located on site which reduces the fuel consumption for carers who would otherwise be traveling around the area to provide care. The site of the development is not considered to be in a flood risk area and will have a neutral impact on flood risk management,

Unintended negative consequences identified:

Mitigating actions:

We will raise awareness of environmental issues with tenants and will encourage recycling and minimising waste.

A healthier Denbighshire

Overall Impact:	Positive
Justification for Impact:	The scheme will contribute to "A healthier Denbighshire" by promoting: Encouraging and promoting independence Contributing to and promoting Age friendly communities Falls prevention Dementia Supportive Communities Preventing loneliness and isolation

Positive consequences identified:

The whole ethos of extra care Housing is about encouraging and supporting health and well-being. The extra Care facility will provide food that is healthy and of good quality and wherever possible locally sourced. The scheme will facilitate participation in a range of leisure opportunities for the tenants and the local community to overcome social isolation.

regular activities will include: gentle mobility, hand and feet yoga, arts and crafts, Digital Inclusion projects, guest speakers and social events.

The scheme will contribute to the overarching aims and outcomes of the Denbighshire's Ageing Well Plan 2015 - 2019 by promoting:

Age friendly communities

Falls prevention

Dementia Supportive Communities

Preventing loneliness and isolation

The scheme will support and promote good access to healthcare.

Unintended negative consequences identified:

Mitigating actions:

A more equal Denbighshire

Overall Impact:	Positive
Justification for Impact:	The scheme will contribute to the overarching aims and outcomes " A more equal Denbighshire" by promoting benefit and grant take up and reducing household bills for energy and utilities.

Positive consequences identified:

The scheme will improve and promote the well being of older people and vulnerable adults.

The scheme will address and reduce health inequalities in older and vulnerable adults and in particular for people with dementia by encouraging supporting and promoting independence and reducing the need for residential care.

The scheme will tackle poverty for older people and vulnerable adults by supporting and encouraging access to benefits and by reducing energy costs. Extra Care costs help people to budget through the provision of the main meal of the day and by dramatically reducing spending on energy and utilities.

Unintended negative consequences identified:

Mitigating actions:

A Denbighshire of cohesive communities

Overall Impact:	Positive
Justification for Impact:	The scheme will contribute to the overarching aims and outcomes of "A Denbighshire of cohesive communities" by promoting community participations, by providing a safe environment for older people and vulnerable adults to live in and by promoting the independence and reliance of the tenants and community participants.

Positive consequences identified:

Extra Care housing provides a safe home environment for the individuals who live there and gives peace of mind to their families and carers.

The new scheme will promote and encourage community participation and will encourage the resilience of the tenants, groups and individuals who utilise the community centre and who participate in the wide range of social activities that will be available.

The design of the development will be in keeping with the character, appearance and diversity of the local community.

Unintended negative consequences identified:

Mitigating actions:

A Denbighshire of vibrant culture and thriving Welsh language

Overall Impact:	
Justification for Impact:	By adopting and implementing a comprehensive Welsh language policy. Every aspect of services will be available bilingually, and that approach would be applied diligently to the face to face housing, care and support services at the scheme as well as other aspects such as signage and literature

Positive consequences identified:

The Housing Association partner in the scheme Cynefin has adopted and is implementing a comprehensive Welsh language policy, and are able to provide every aspect of their services bilingually, and that approach would be applied diligently to the face to face housing, care and support services at the scheme as well as other aspects such as signage and literature

All staff at the scheme will be bilingual and will promote the Welsh Language . All literature and support will be offered equally in Welsh and English.

The scheme will promote and respect the local culture and heritage.

Unintended negative consequences identified:

Mitigating actions:

A globally responsible Denbighshire

Overall Impact:	
Justification for Impact:	The scheme will promote the Human rights of everyone working within the scheme and will be aware of responsibility to promote human rights through responsible sourcing of suppliers .

Positive consequences identified:

The scheme will employ responsible, accredited local suppliers.

The scheme will promote the Human rights of everyone working within the scheme and will be aware of responsibility to promote human rights through responsible sourcing of suppliers

Unintended negative consequences identified:

Mitigating actions: